

ICS Teaching Module: Urodynamic Artefacts 1

Common artefacts in water-filled systems

A Gammie, C D'Ancona, H-C Kuo & P Rosier.



ICS International Continence Society
Teaching Module

International Continence Society (ICS) Guest Speaker: DISCLOSURES

- Andromeda, Digitimer, Laborie, Mediwatch
 - Project sponsorship
- T-Doc LLC
 - Trial sponsorship
- Astellas, Ono Pharma, Vysera, Flexicare
 - Consultancy
- E2L Ltd
 - Royalties from www.UrodynamicsTrainer.com

Common artefacts in water filled sysytems

Dr. Ahmet Özgür Güçtaş

Common artefacts in water-filled systems

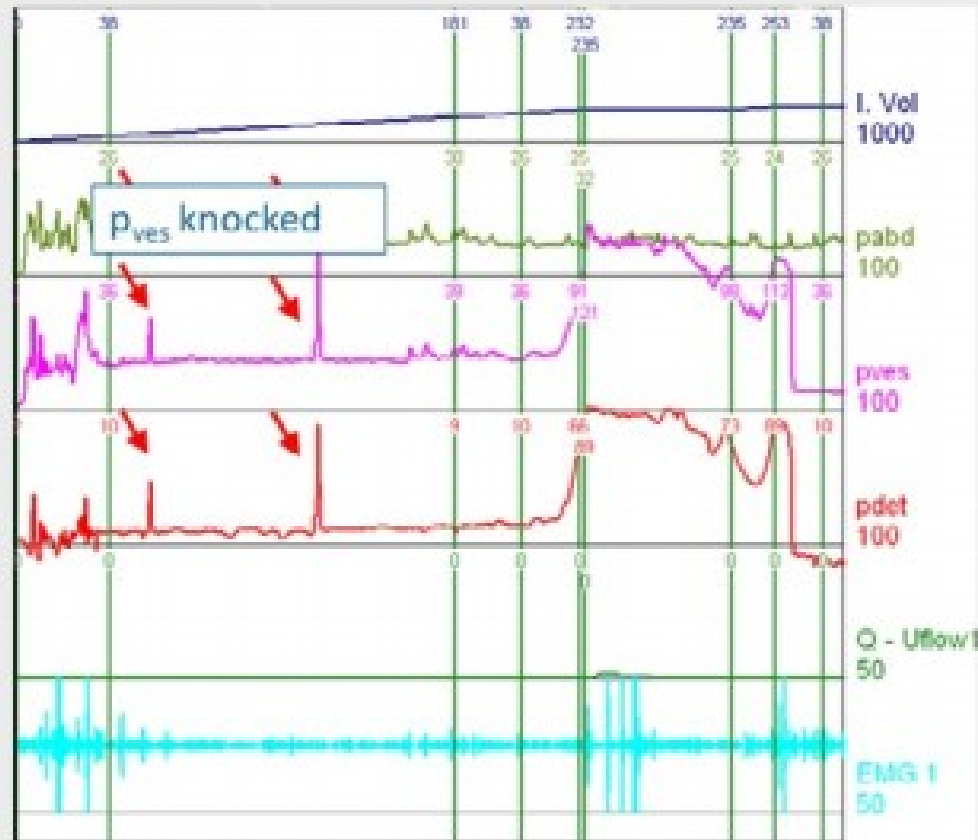
Artefact: 'Something ...that is not naturally present but occurs as a result of ...the procedure' (Oxford)

- Movement / tube knock
- Patient position change
- Expelled vesical catheter
- Expelled rectal catheter
- Flushed catheter
- Line open to syringe
- Empty bladder (poor response)
- Empty rectal catheter
- Poor cough response

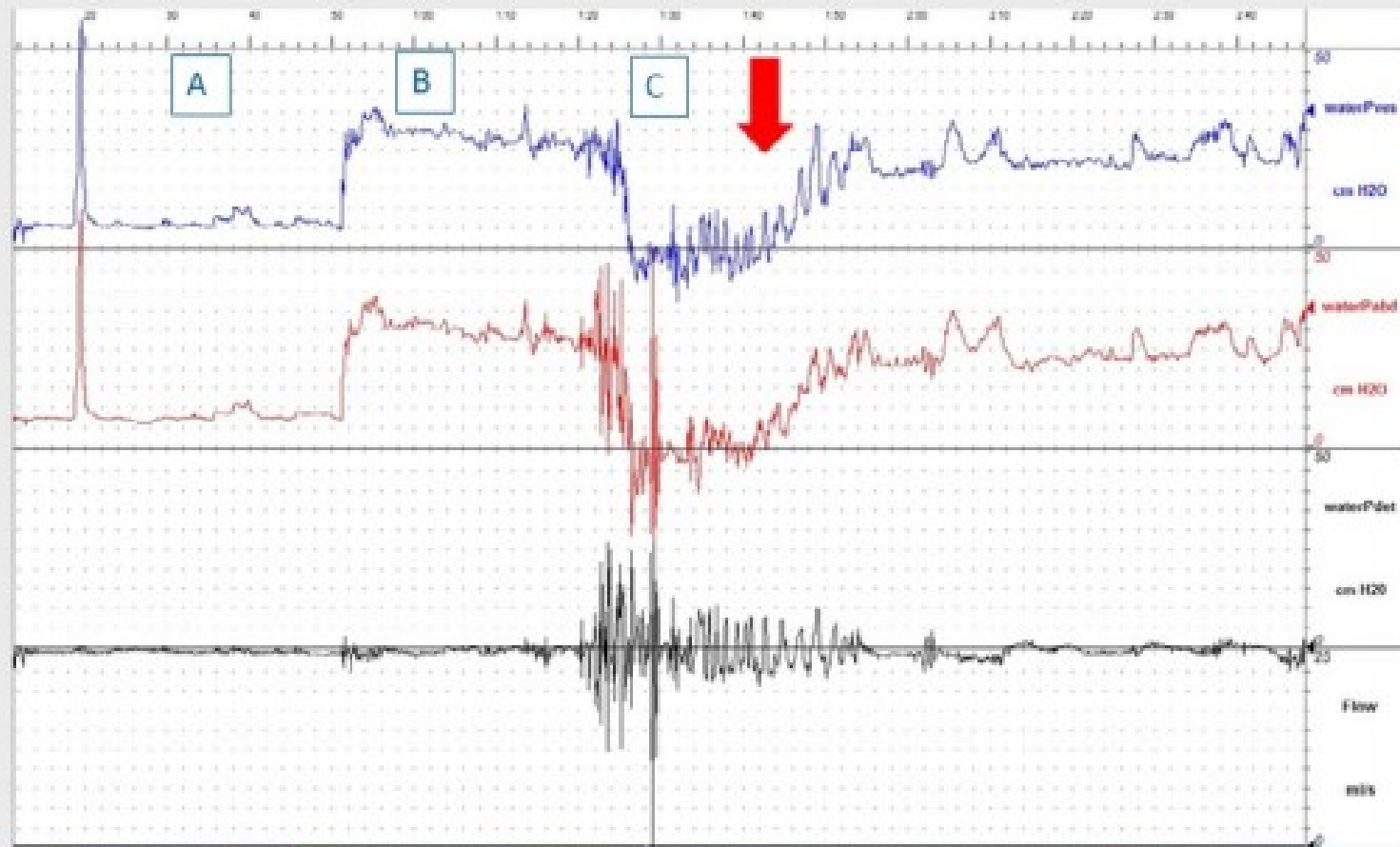
Movement / tube knock (water)



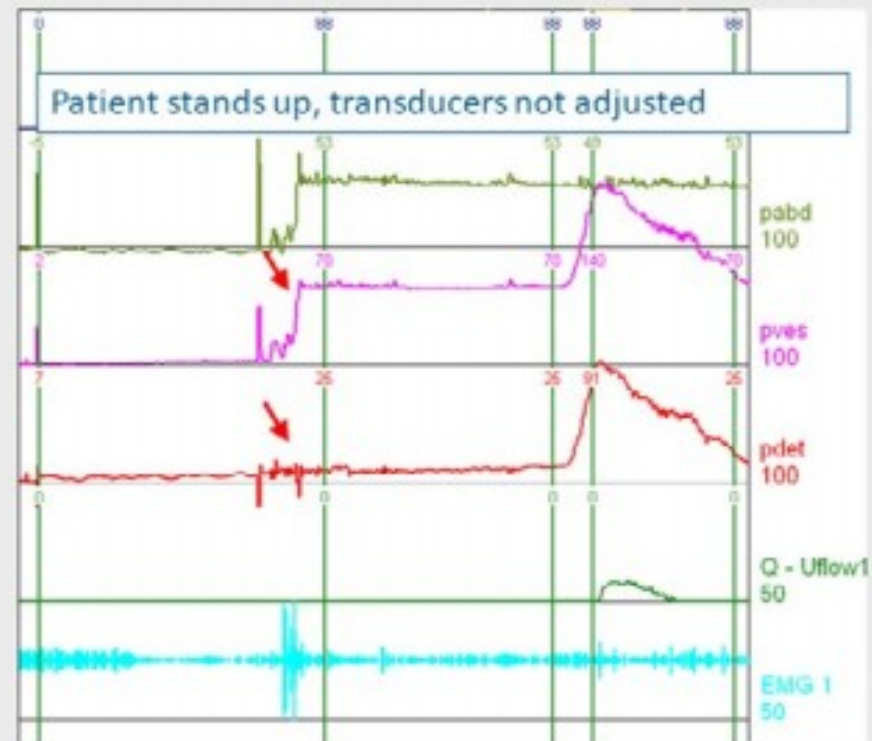
Movement / tube knock (water)



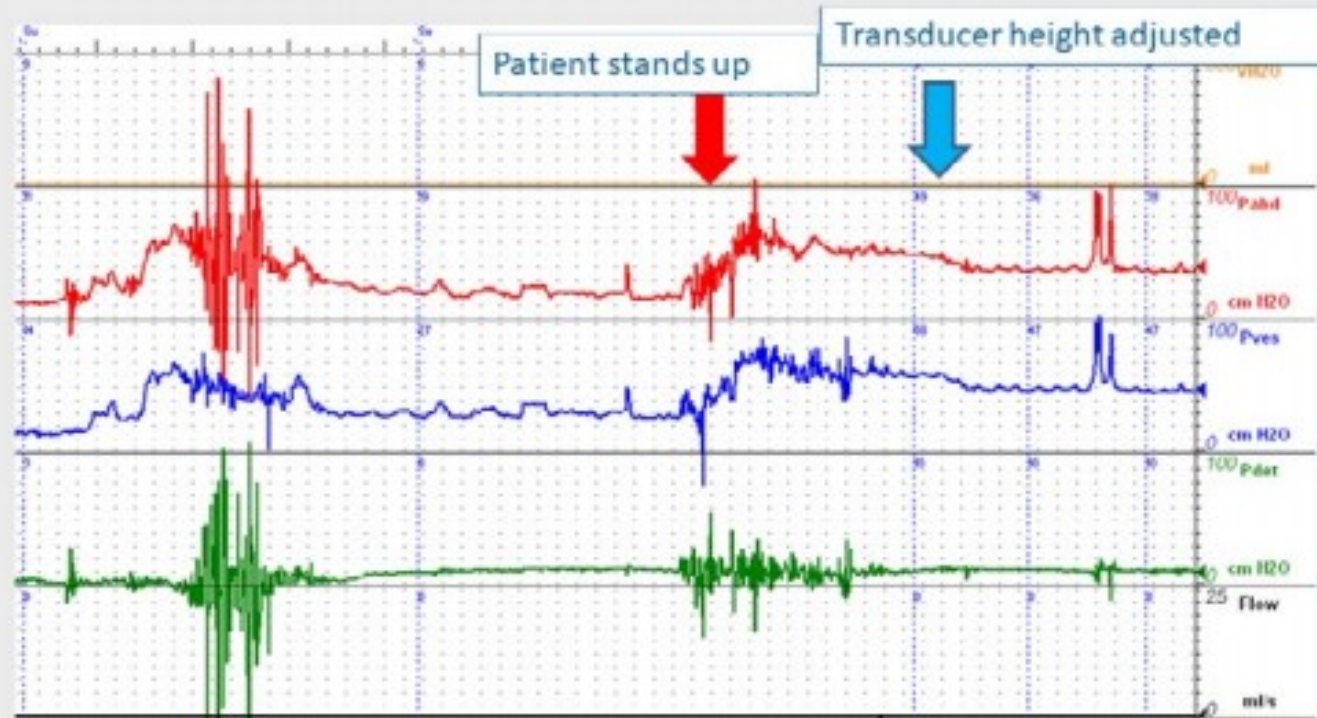
Patient position change (water filled)



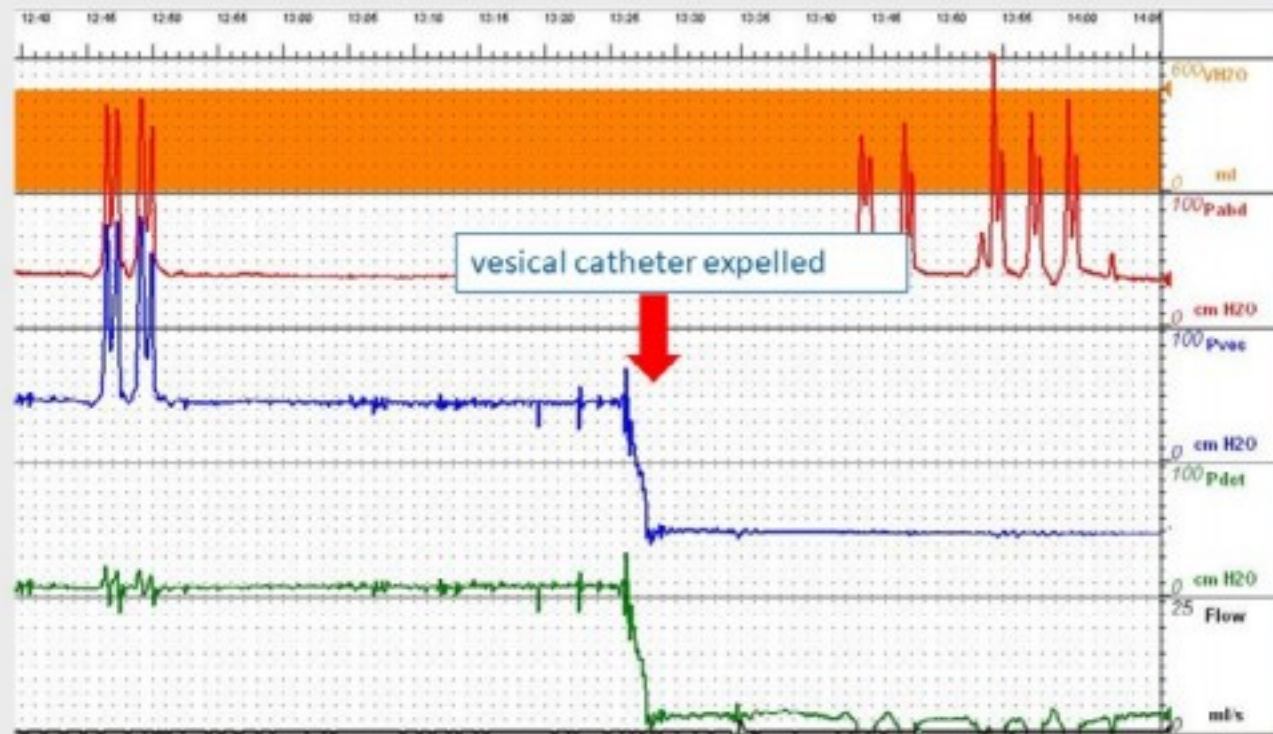
Patient position change (water filled)



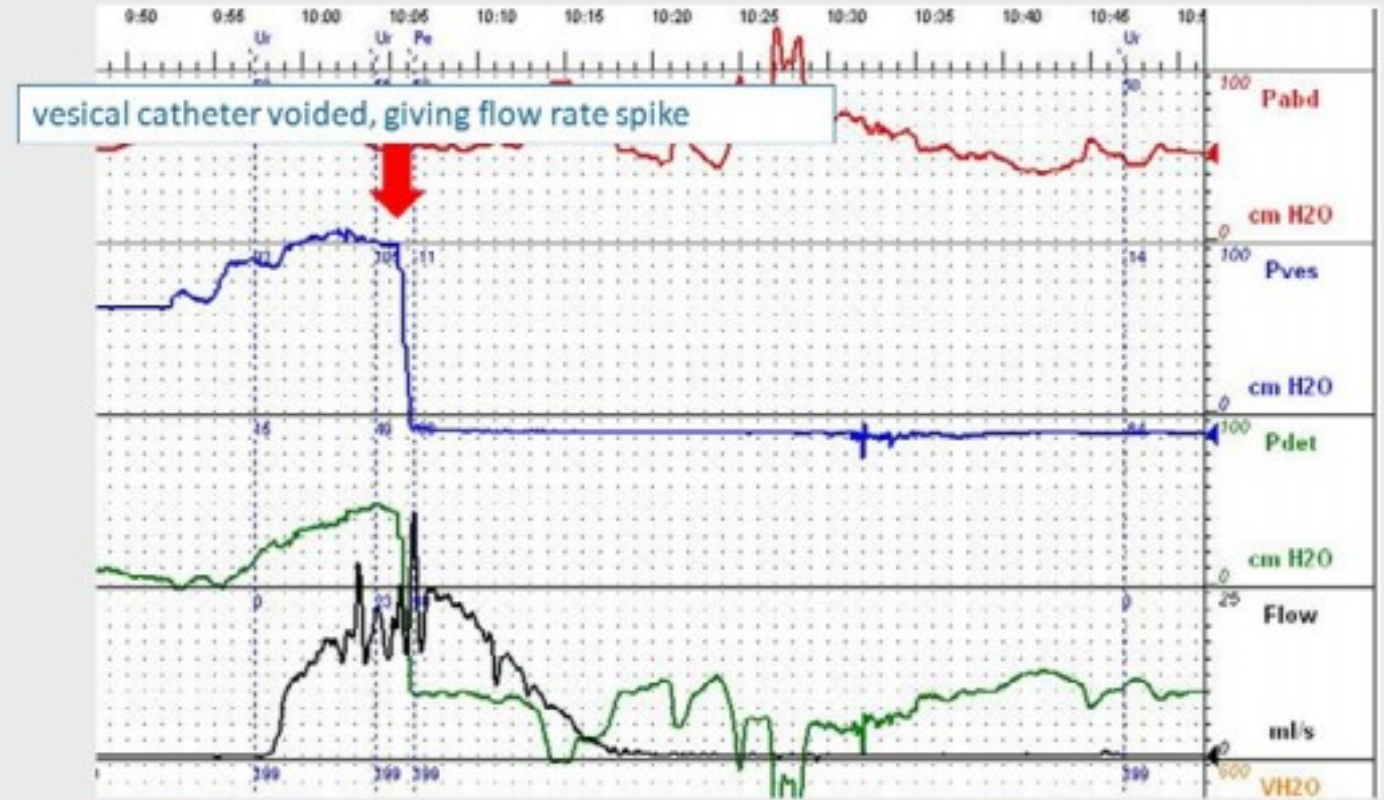
Patient position change (water filled)



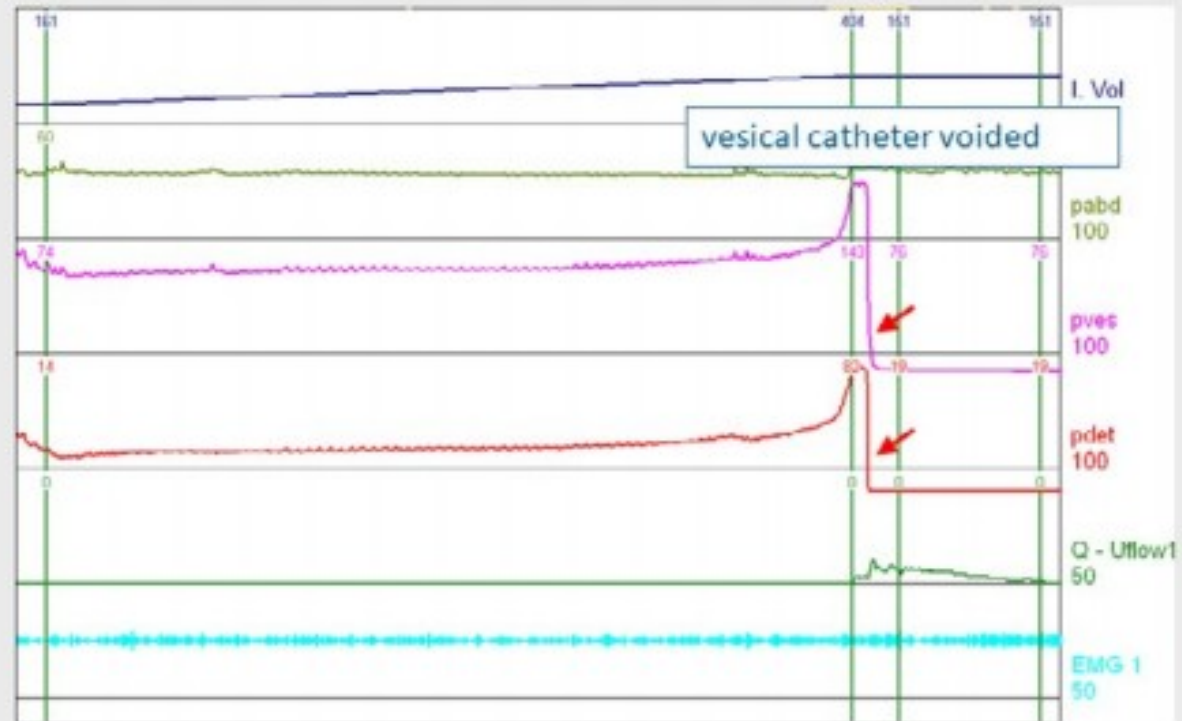
Expelled vesical catheter



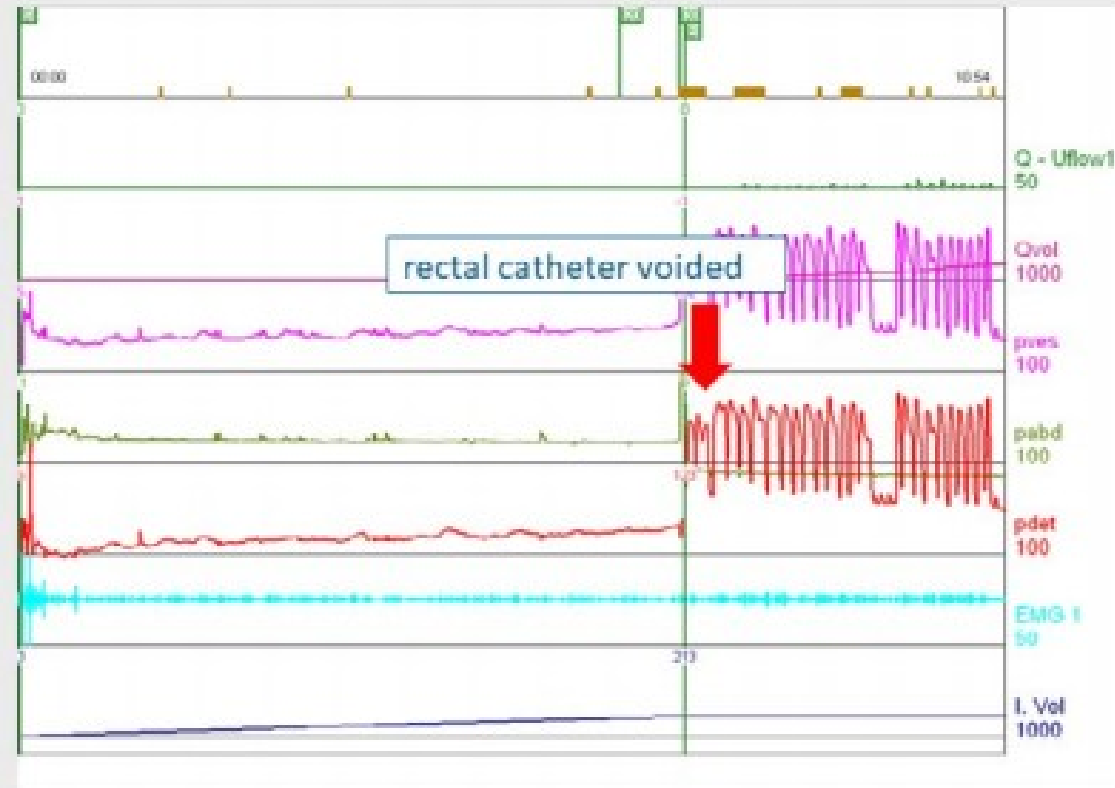
Expelled vesical catheter



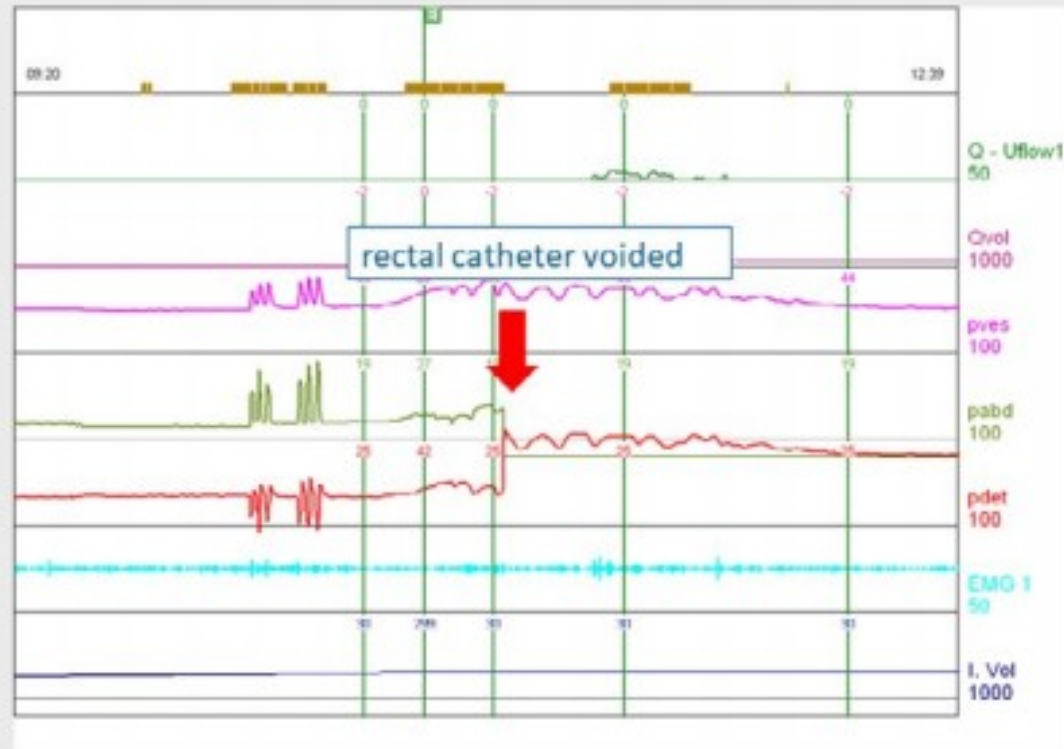
Expelled vesical catheter



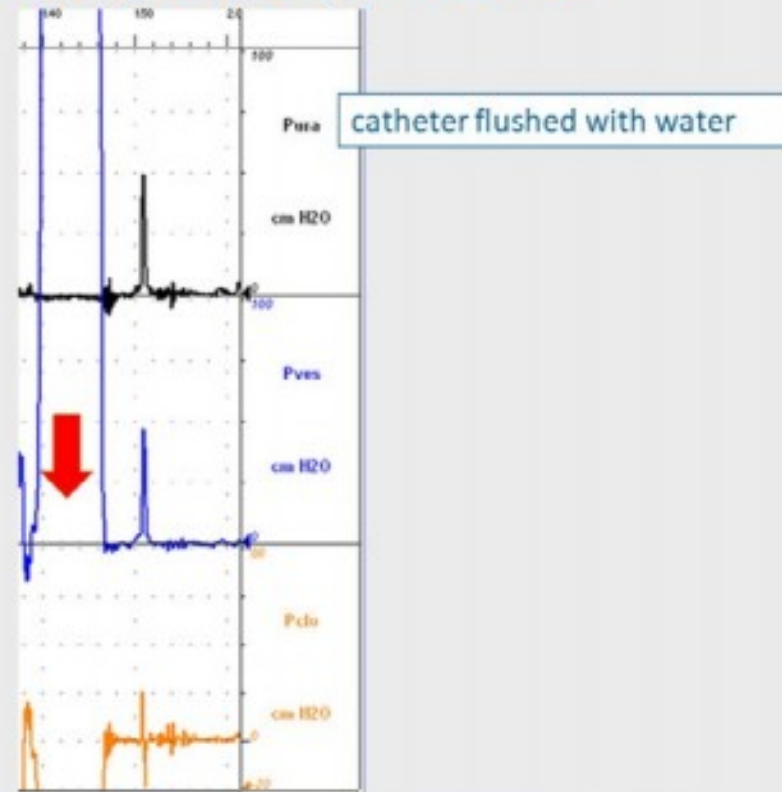
Expelled rectal catheter



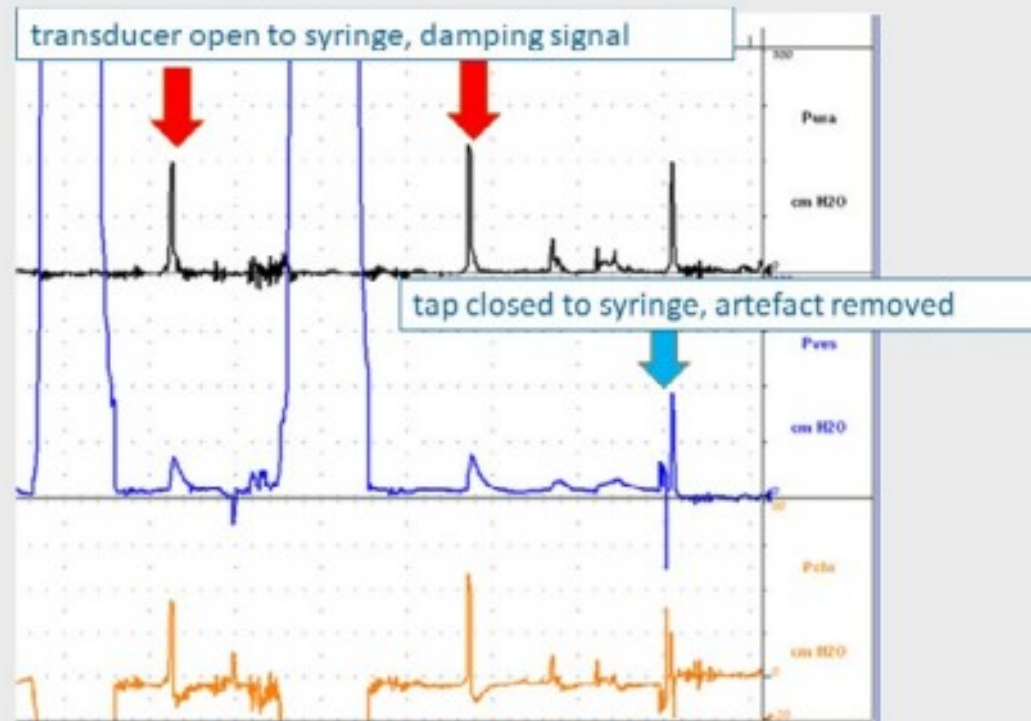
Expelled rectal catheter



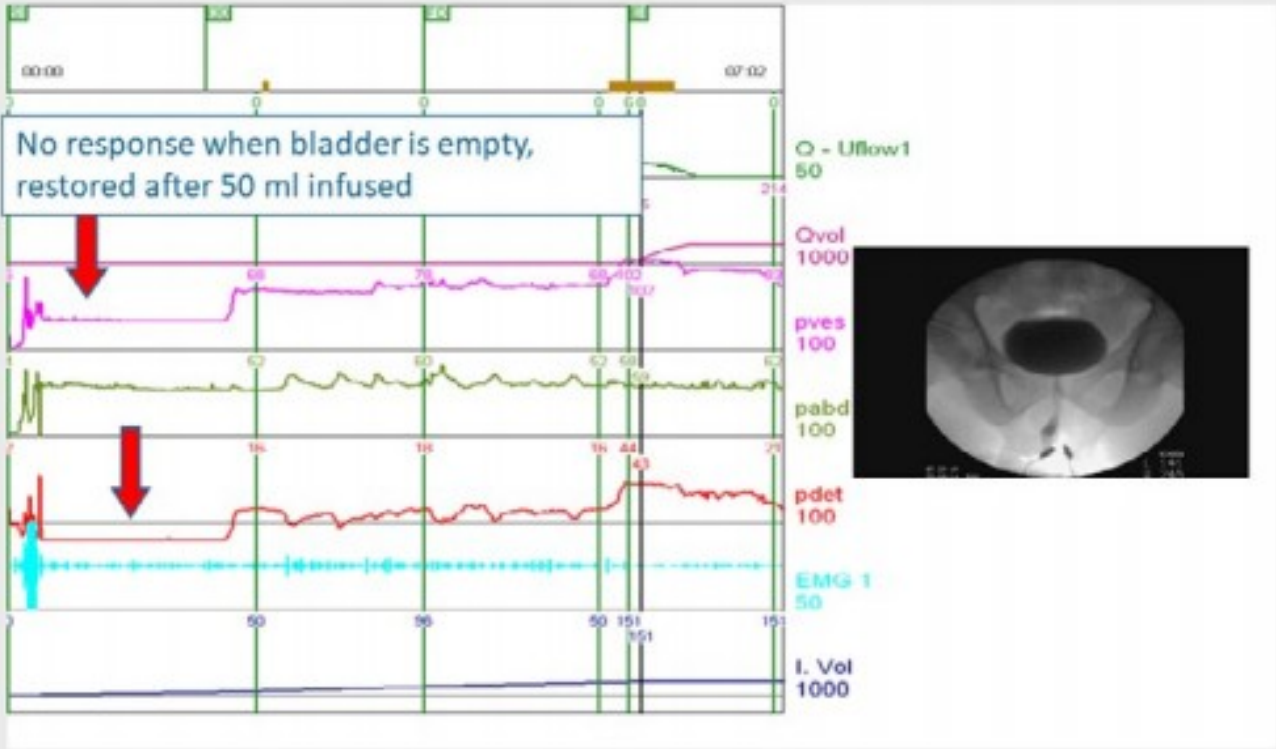
Flushed (water) catheter



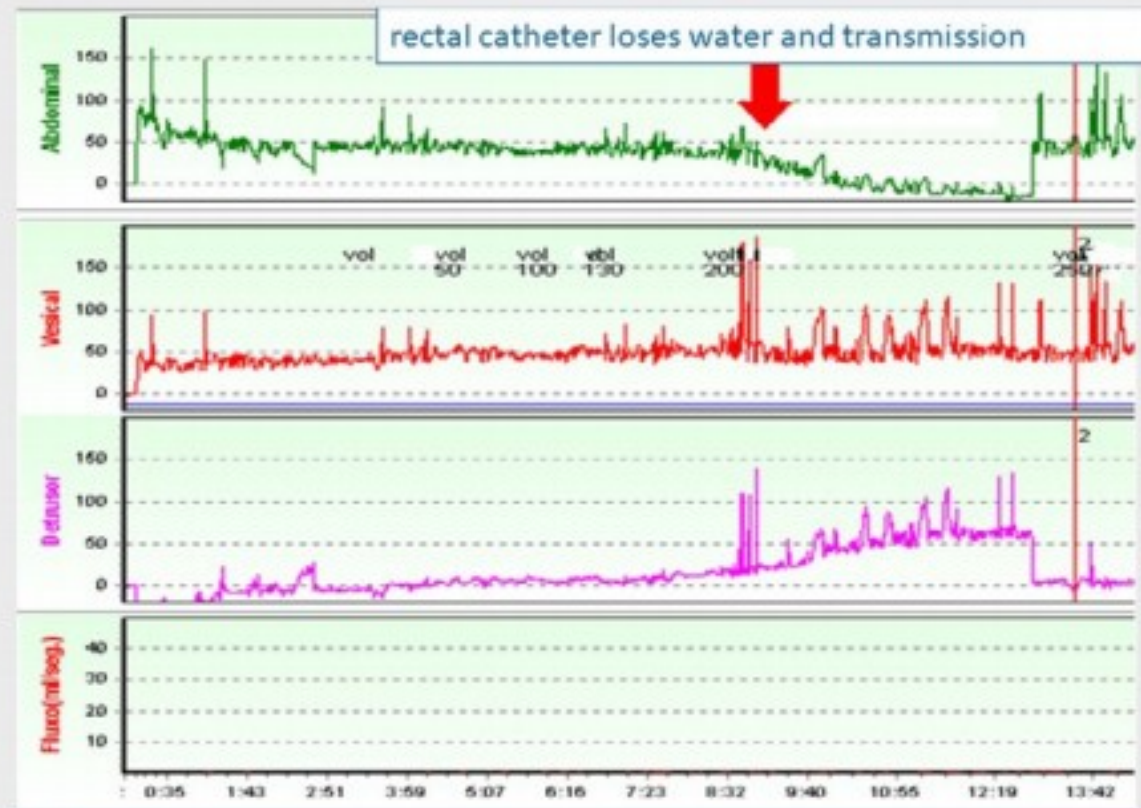
Line open to syringe (water)



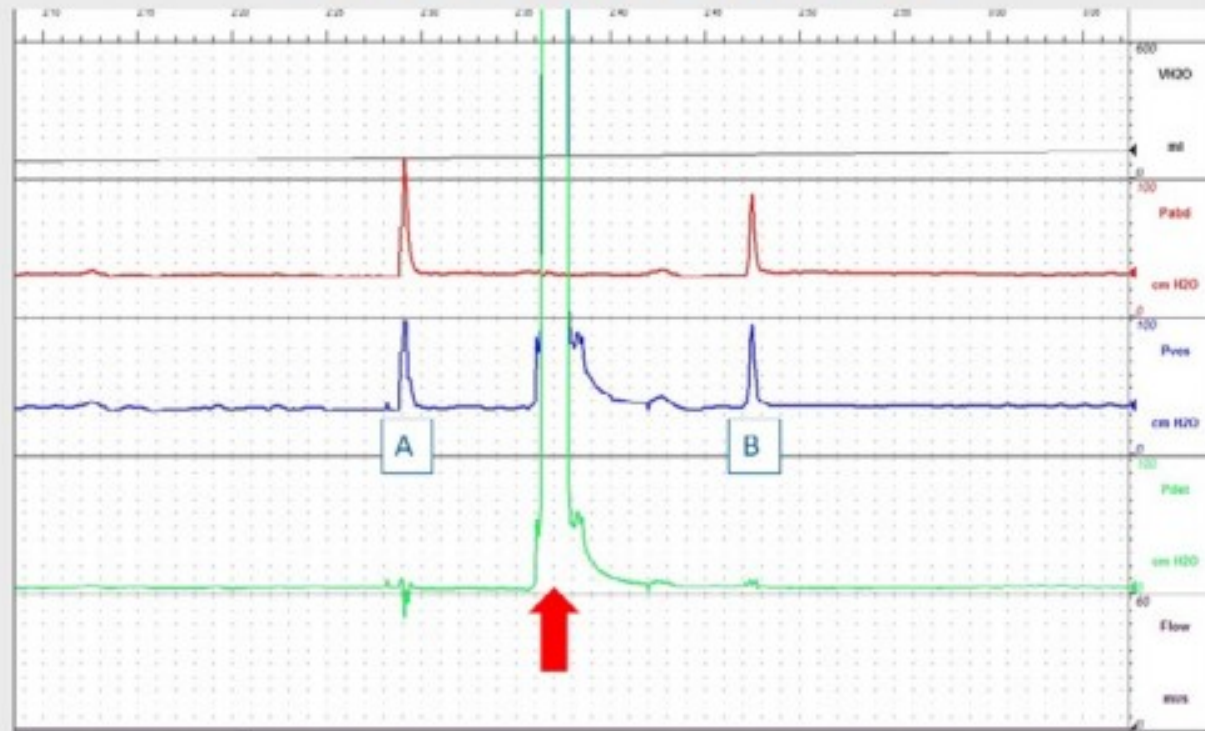
Empty bladder (poor response)



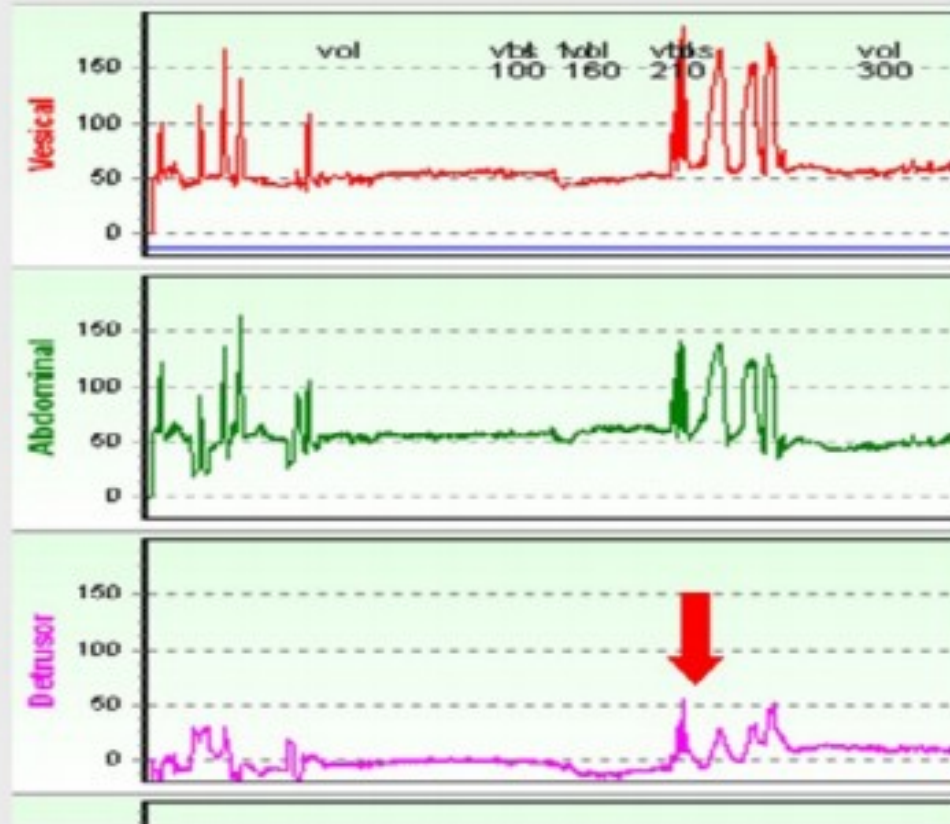
Empty rectal catheter (water)



Poor cough response



Poor cough response



Poor response to live signal

